



KRIMINALOMSORGEN



## Execution of the sentence with electronic monitoring – who does this apply to?

**If you have been sentenced to unconditional imprisonment for a term of four months or less, you can apply at The Norwegian Correctional Service self-service portal to serve the entire sentence at home with electronic monitoring (full execution of sentence).**

If you are already in the process of serving a prison sentence, you can apply to be transferred to electronic monitoring for the final four months prior to your release (partial execution of sentence). At least one-third of the unconditional prison sentence must have been served before you can potentially be transferred. **Make sure you apply well in advance!**



You must have the ankle bracelet on you at all times.

If you attempt to remove it, an alarm will be triggered.

The ankle bracelet is small and can be covered.

The ankle bracelet is waterproof and you may therefore shower and bathe.

The Norwegian Correctional Service uses two types of electronic monitoring; RF and GPS.

## Some conditions

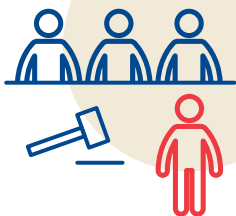
- If you will live together with someone over the age of 18, he or she must consent to you serving the sentence with electronic monitoring at that residence. Children under the age of 18 must receive information.
- When you serve a sentence with electronic monitoring, you must have work, attend school, study or have another form of employment.
- You must accept that the Norwegian Correctional Service will make unannounced control visits to both your home and workplace.
- You must meet regularly with the Norwegian Correctional Service during execution of the sentence.
- You must be at home and may only leave the home by agreement with the Norwegian Correctional Service.
- You must refrain from any use of alcohol and other intoxicants.
- If you do not comply with the rules for electronic monitoring, you can be transferred to prison and be made to serve the remainder of your sentence there.

# Application, commencement and execution

For more detailed information about the execution of a sentence with electronic monitoring, visit [www.kriminalomsorgen.no](http://www.kriminalomsorgen.no) – or scan the qr-code for information of your nearest probation office:



## Unconditional prison sentence



## Application for full execution of the sentence

You will receive information and a letter of application sent by post to your home address and as digital post. Applications can be sent by post or electronically.



## Application for partial execution of the sentence

You commence execution of the sentence in prison. Here you will receive assistance from a member of staff in applying to be transferred to electronic monitoring.



## Suitability assessment

This is a conversation between you and the Norwegian Correctional Service to determine whether you are suitable for executing the sentence with electronic monitoring. If you will live together with someone over the age of 18, he or she must consent to you serving the sentence at that residence.

## Attachment of the ankle bracelet

The Norwegian Correctional Service will visit you at home and attach the ankle bracelet on the day electronic monitoring is scheduled to commence. In addition, a small box (receiver station) will be placed in the home.



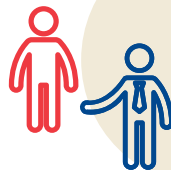
## Employment

You must have work, attend school, study or have another form of activity. The Norwegian Correctional Service can assist you in finding an appropriate activity.



## Compulsory meetings

You must meet with the Norwegian Correctional Service each week for conversations or other follow-up.



## Controls

The Norwegian Correctional Service will make unannounced control visits to both your home and workplace. The consumption of alcohol and other intoxicants is not permitted. Substance abuse checks will be conducted in a discreet manner. If you violate these rules, you will be transferred to prison immediately.

## Leave

You are permitted to have a few hours of leave each week that can be used for personal tasks.



## Release

The Norwegian Correctional Service will visit you at home and remove the ankle bracelet and the receiver station.

